

Tisch- und Stuhlbehaftungssysteme und Zubehör



 barka
s.r.l.



barka
s.r.l.

Elektrische Stuhl Hebe- und Senksysteme electric chair pedestal



Max. Belastung: 250kg
Maximum load: 250 Kg.

Misure	13099	13099/R	14099
1	Ø 250	Ø 250	Ø 250
2	100	100	100
3	80	80	80
4	250x250	250x250	250x250
5	420	190<>330	100
6	550	320<>460	230
7	20	165<>30	260

Hebesystem mit Gasdruckfeder deluxe gas chair pedestal



Misure	12508	12508/R
1	Ø 250	Ø 250
2	100	100
3	80	80
4	250x250	250x250
5	390	230<>385
6	580	230<>410
7	-	190<>30

Verstellbare Basis
periscope base

Zweifach elektrisch ausfahrbares Gestell

two stages electric table pedestals

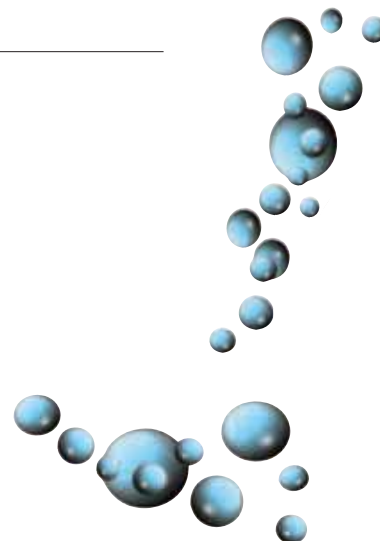


12398/E



12498/E

Fixierte Basis
screw fixed base

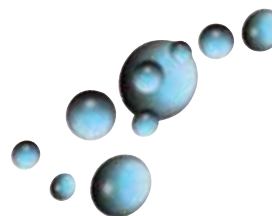


12398/35-40



12498/35-40

Variable Basis
periscope base



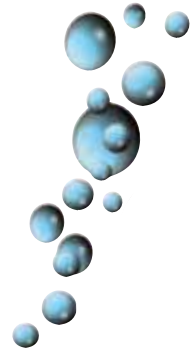
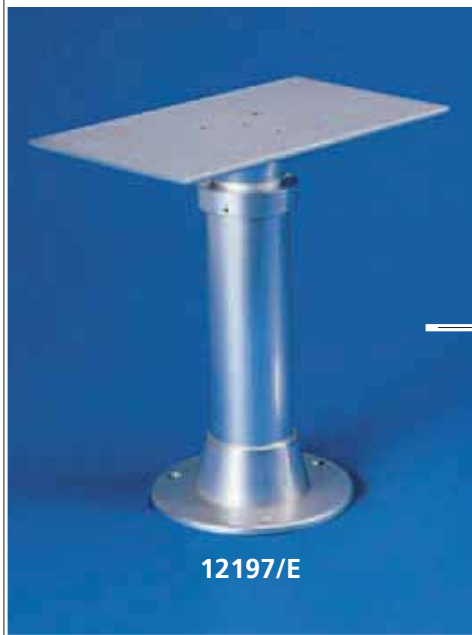
Max. Belastung: 80kg
Maximum load: 80 Kg.



Misure	12398/E	12398/35	12398/40	12498/E	12498/35	12498/40
1	Ø 250	Ø 250	Ø 250	Ø 250	Ø 250	Ø 250
2	100-80	100-80	100-80	100-80	100-80	100-80
3	60	60	60	60	60	60
4	375x285	375x285	375x285	Ø 250	Ø 250	Ø 250
5	380	180<>345	180<>370	380	190<>340	190<>365
6	730	530<>695	580<>770	730	540<>690	590<>765
7	20	195<>30	220<>30	20	175<>30	200<>30

Elektrische Tisch Verstellsysteme

electric table pedestals



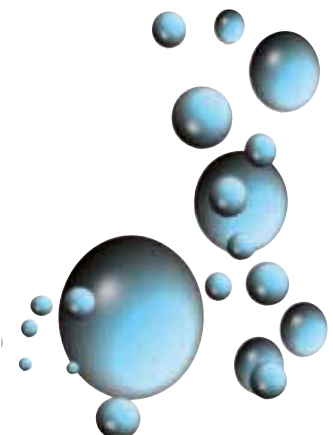
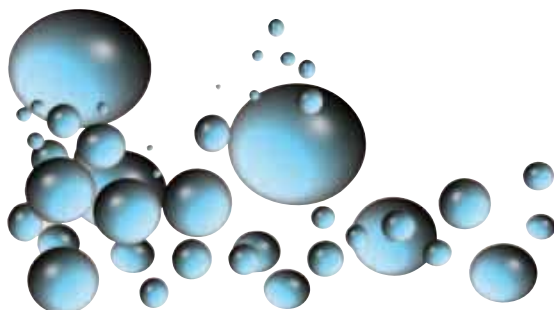
Drehbarer Kopf
swiveling top

Misure	12197/E	12197/E/G	12198/E	12199/E
1	Ø 250	Ø 250	Ø 250	Ø 250
2	100	100	80	80
3	80	80	60	60
4	440x250	440x250	375x285	330x190
5	460	465	460	490
6	710	715	710	740
7	20	20	20	20

Max. Belastung: 80kg
Maximum load: 80 Kg.



Verschiebbarer Kopf
sliding top



Elektrische Tisch Verstellssysteme mit variabler Basis electric table pedestals with periscope base



Misure	12297/35	12297/40	12297/35/G	12297/40/G
1	Ø 250	Ø 250	Ø 250	Ø 250
2	100	100	100	100
3	80	80	80	80
4	440x250	440x250	440x250	440x250
5	180<>530	180<>580	200<>550	200<>600
6	530<>880	580<>980	550<>900	600<>1000
7	375<>30	425<>30	375<>30	425<>30

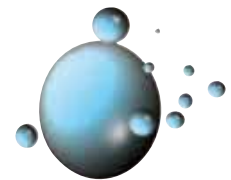
Drehbarer Kopf
swiveling top



Misure	12298/35	12298/40	12299/35	12299/40
1	Ø 250	Ø 250	Ø 250	Ø 250
2	80	80	80	80
3	60	60	60	60
4	375x285	375x285	330x190	330x190
5	150<>530	150<>580	195<>560	195<>610
6	500<>930	550<>980	545<>910	595<>960
7	405<>20	455<>20	385<>20	435<>20

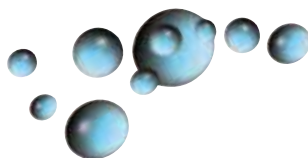


Max. Belastung: 80kg
Maximum load: 80 Kg.



Verschiebbarer Kopf
sliding top

Misure	12697/65	12697/70
1	Ø 250	Ø 250
2	100	100
3	80	80
4	440x250	440x250
5	75	75
6	725	775
7	780	830



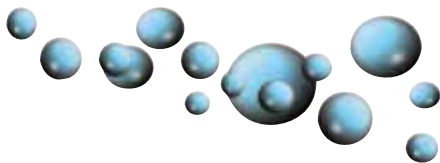
... ganz versenkt
... almost flush



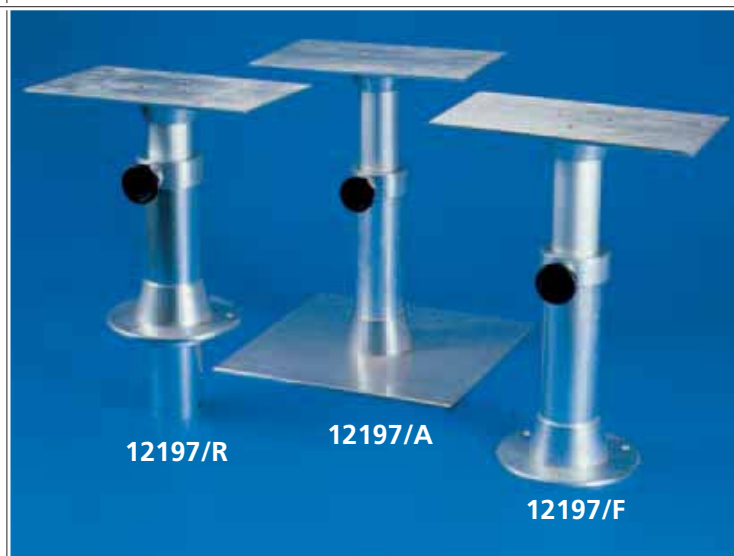
Einheit durch Gasdruckfeder verstellbar telescopic gas pedestals



Misure	10101/R/35	10101/R/40	10101/A/30	10101/A/35	10101/F/30	10101/F/35	10103/R/35	10103/R/40	10103/F/30
1	Ø 250	Ø 250	500x500	500x500	Ø 250	Ø 250	Ø 250	Ø 250	Ø 250
2	80	80	80	80	80	80	80	80	80
3	60	60	60	60	60	60	60	60	60
4	375x285	375x285	375x285	375x285	375x285	375x285	330x190	330x190	330x190
5	145<>455	145<>505	430	475	430	475	190<>500	190<>550	475
6	495<>805	545<>905	720	815	720	825	530<>840	585<>945	765
7	330<>20	380<>20	-	-	-	-	330<>20	380<>20	-



Misure	12197/R	12197/A	12197/F
1	Ø 250	500x500	Ø 250
2	100	100	100
3	80	80	80
4	440x250	440x250	440x250
5	190<>500	440	440
6	565<>810	730	730
7	335<>25	-	-



Verstellbare Systeme telescopic table pedestals

Händisch oder mit Gasdruckfeder
gas or manual

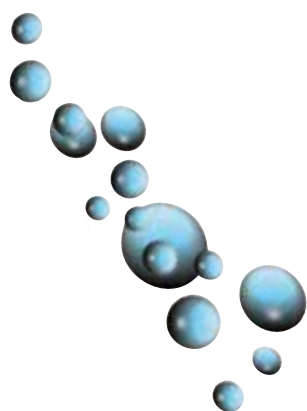
Durchgesteckt
through floor



man	10102/M/35	10102/M/40	10512
gas	10102/35	10102/40	-
1	Ø 300	Ø 300	Ø 220
2	80	80	80
3	60	60	60
4	375x285	375x285	Ø 220
5	200<>450	200<>500	370
6	550<>800	600<>900	760
7	275<>25	325<>25	140

10102: Nur als Serienteil lieferbar für Werften.
Bitte Maße exakt angeben.

10102: Please specify dimension 5 on order.
Not available for one-off orders.



man	10197/M/30	10197/M/35	-	-
gas	10197/30	10197/35	10198/30	10198/35
1	Ø 300	Ø 300	Ø 300	Ø 300
2	80	80	80	80
3	60	60	60	60
4	375x285	375x285	Ø 220	Ø 220
5	440	475	440	475
6	730	800	730	800
7	-	-	-	-



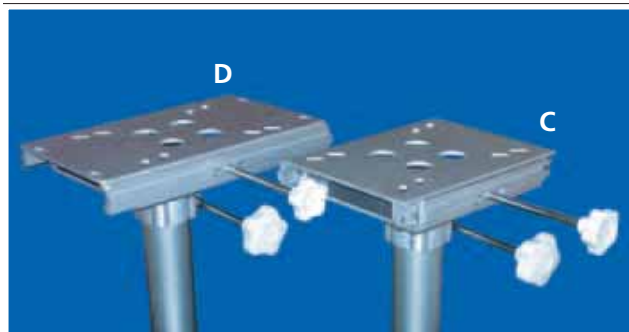
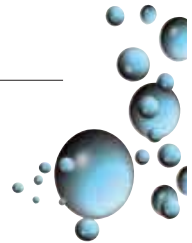
Verstellbare Stuhlhaltesysteme

telescopic chair pedestals

Misure	10510/A	10510/B	10510/C	10510/D	10600/A	10600/B	10600/C	10600/D	10605/A	10605/B	10605/C	10605/D
1	Ø 220	Ø 220	Ø 220	Ø 220	Ø 220	Ø 220	Ø 220	Ø 220	Ø 300	Ø 300	Ø 300	Ø 300
2	80	80	80	80	80	80	80	80	80	80	80	80
3	60	60	60	60	60	60	60	60	60	60	60	60
4	220X220	330X180	250X190	330X190	220X220	330X180	250X190	330X190	220X220	330X180	250X190	330X190
5	380	380	410	410	400	400	430	430	400	400	430	430
6	800	800	830	830	600	600	630	630	600	600	630	630
7	170	170	170	170	-	-	-	-	-	-	-	-



Mit zwei Handrädern
two handles



Verschiebbar
with slider



Mit einem Handrad
one handle

Misure	10800/A	10800/B	10800/C	10800/D	10805/A	10805/B	10805/C	10805/D
1	Ø 220	Ø 220	Ø 220	Ø 220	Ø 300	Ø 300	Ø 300	Ø 300
2	80	80	80	80	80	80	80	80
3	60	60	60	60	60	60	60	60
4	220X220	330X180	250X190	330X190	220X220	330X180	250X190	330X190
5	400	400	430	430	400	400	430	430
6	600	600	630	630	600	600	630	630
7	-	-	-	-	-	-	-	-

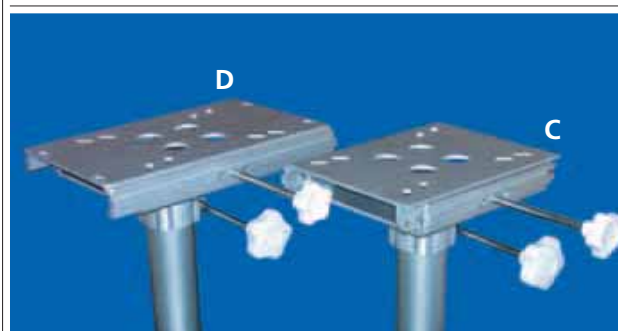
Stuhlhaltesysteme chair pedestals

Misure	10505/A	10505/B	10505/C	10505/D	10506/A	10506/B	10506/C	10506/D	10803/A	10803/B	10803/C	10803/D
1	Ø 220	Ø 220	Ø 220	Ø 220	Ø 220	Ø 220	Ø 220	Ø 220	Ø 300	Ø 300	Ø 300	Ø 300
2	60	60	60	60	80	80	80	80	80	80	80	80
3	-	-	-	-	-	-	-	-	-	-	-	-
4	220X220	330X180	250X190	330X190	220x220	330X180	250x190	330X190	220X220	330X180	250x190	330X190
5	-	-	-	-	-	-	-	-	-	-	-	-
6	435	435	465	465	435	435	465	465	305	305	335	335
7	-	-	-	-	-	-	-	-	-	-	-	-



Feste Höhe
fixed height

Verschiebbar
with slider



Abnehmbar
removable



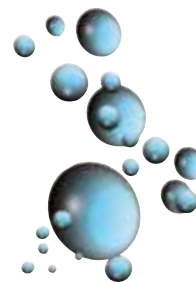
Misure	10502/A	10502/B	10504/A	10504/B	10504/C	10504/D	10700/A	10700/B	10700/C	10700/D
1	Ø 165	Ø 165	Ø 180	Ø 180	Ø 180	Ø 180	Ø 180	Ø 180	Ø 180	Ø 180
2	55	55	80	80	60	60	80	80	80	80
3	-	-	-	-	-	-	60	60	60	60
4	220X220	330X180	220X220	330x180	250x190	330X190	220x220	330X180	250X190	330X190
5	-	-	-	-	-	-	400	400	430	430
6	390	390	400	400	430	430	600	600	630	630
7	55	55	70	70	70	70	70	70	70	70

Tischhaltesysteme

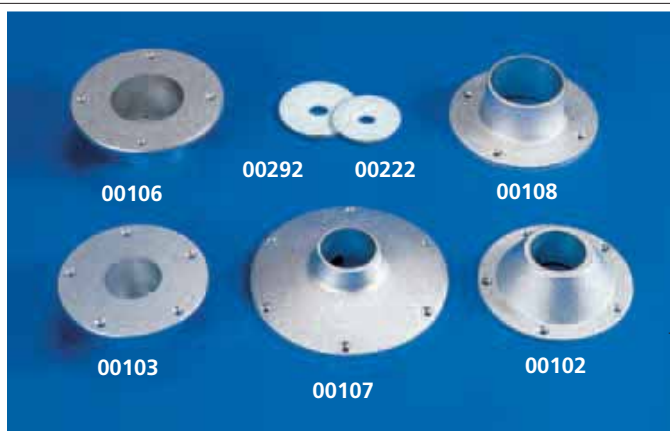
table "post" system



Misure	10191	10193	10195
1	Ø 165	Ø 180	Ø 180
2	55	80	80
3	-	-	60
4	Ø 165	Ø 180	Ø 220
5	-	-	475
6	660	700	820
7	55	70	70



Zubehör accessories



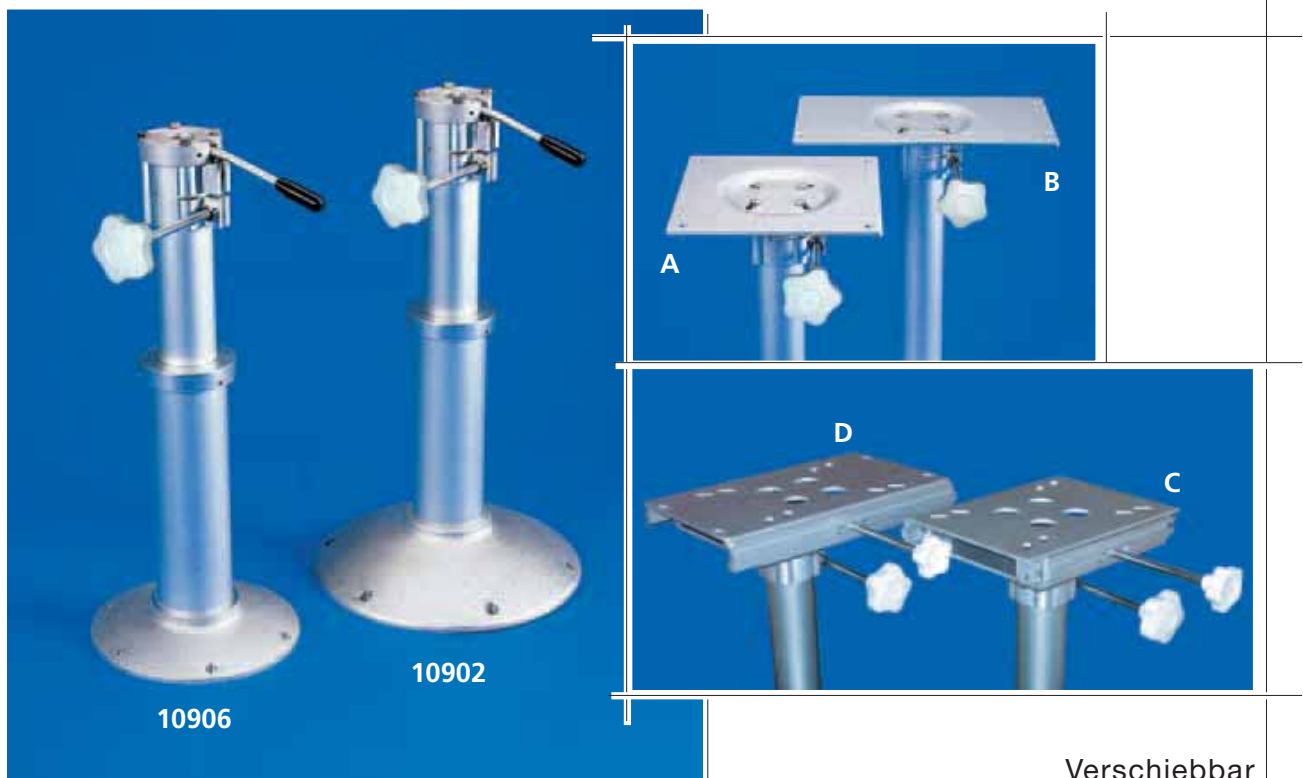
	Ø est ext dia	Ø tubo tube dia	sporgenza projection	Ø foro hole dia
00102	170	55	-	-
00103	165	55	55	70
00106	180	80	70	95
00107	220	55	-	-
00108	180	80	-	-
00292	tappo per art. 00106 / cover for art. 00106			
00222	tappo per art. 00103 / cover for art. 00103			

	dimensioni size
00100 (A)	220 x 220
00101 (B)	180 x 330
10900 (C)	200 x 250
10901 (D)	200 x 330



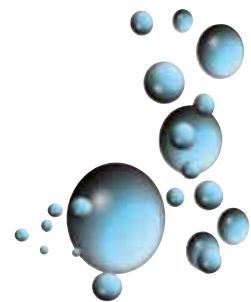
Sitzhaltesysteme mit Gasdruckfeder

"soft" seat gas pedestals



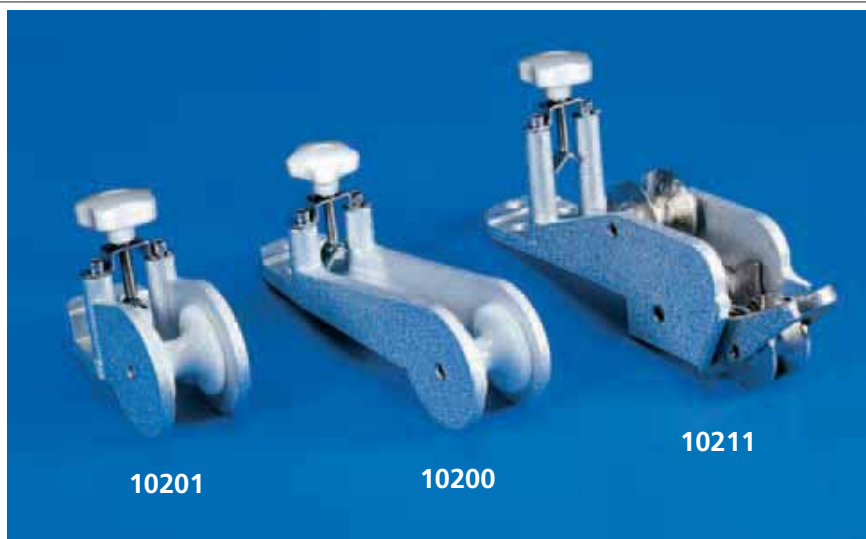
Misure	10902/A	10902/B	10902/C	10902/D	10906/A	10906/B	10906/C	10906/D
1	Ø 300	Ø 300	Ø 300	Ø 300	Ø 220	Ø 220	Ø 220	Ø 220
2	80	80	80	80	80	80	80	80
3	60	60	60	60	60	60	60	60
4	220x220	330x180	250x190	330x190	220x220	330x180	250x190	330x190
5	400	400	430	430	400	400	430	430
6	590	590	620	620	590	590	620	620
7	-	-	-	-	-	-	-	-

Verschiebbar
with slider



Ankerrollen

anchor roller



X	Lunghezza fuori tutto / Overall length
Y	Appoggio in coperta / Finixing base
Z	Dimensioni / Maximum aperture

	10200	10201	10211
X	340	200	340
Y	240 X 75	110 X 80	220 X 85
Z	250 X 550	250 X 450	250 X 1000

Seewasserbeständiges Aluminium. Mit Fixierung der Kette mittels Handrad.

Anodised light alloy fairlead anchor rollers with locking knob using stainless steel screws and pins.

Sitzrohlinge

chairs

YACHTSMAN

	11000
X	410
Y	500
Z	520



11000

COMMODORE



11001

	11001
X	450
Y	530
Z	520

	11002
X	420
Y	480
Z	410

SEAFARER



11002



ADMIRAL



11004

	11004
X	420
Y	510
Z	500

Sitzrohlinge
chairs

Neue Tischhaltesysteme

table "post" system

Neuheit



Misure	10293	10295	10393
1	Ø 180	Ø 180	Ø 270
2	80	80	80
3	-	60	-
4	Ø 270	Ø 220	Ø 270
5	-	380	-
6	695	700	760
7	65	65	-



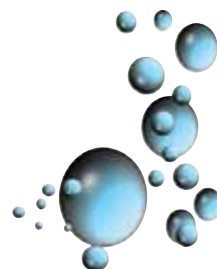
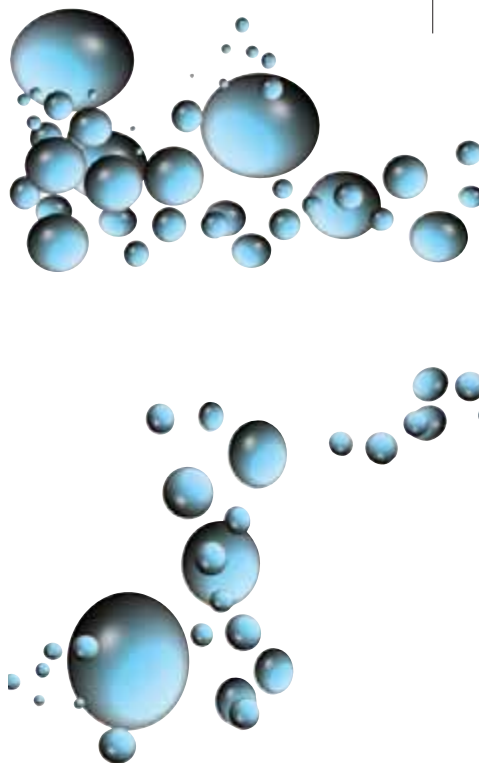
10293



10295



10393



... mit Gasdruckfeder

gas table pedestals

Misure	12193
1	Ø 250
2	100
3	80
4	330x190
5	475
6	760
7	-



12193



Neuheit

... elektrisch verstellbar
electric table pedestals

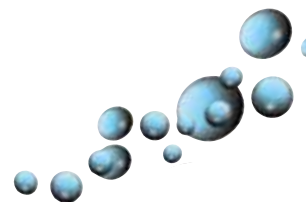


18198



18898

Misure	18198	18898
1	Ø 400	Ø 400
2	150	150-122
3	122	94
4	Ø 400	Ø 400
5	450	350
6	700	700
7	30	30



Spannung: 12 oder 24Volt

... nahezu ganz flach

... almost flush

Supporto tavolo elettrico a due stadi, 12 o 24 V CC.
Incasso a filo del pavimento con solo 30 mm di spessore.
Sporgenza sotto pagliolo 545 mm inferiore all'elevazione 760 mm.
Possibilità di installazione in coppia.

Misure	18697	19697
1	Ø 250	Ø 250
2	150-122	150
3	94	122
4	400x250	400x250
5	30	25
6	760	725
7	545	897



18697



19697

Obiettivo qualità

Top quality

MATERIALE DI COSTRUZIONE

Per la produzione di basi e supporti impieghiamo esclusivamente l'ANTICORODAL, una lega leggera specificamente prevista per l'uso marino la cui resistenza alla corrosione è molto superiore alle altre leghe leggere.

FINITURA SUPERFICIALE

Tutti i tubi utilizzati per i supporti sono anodizzati a spessore. Le basi fuse subiscono un doppio trattamento: una "sabbiatura" con sfere d'acciaio che provvede a chiudere le porosità sempre presenti nelle fusioni, ed una brillantatura, un'anodizzazione, cioè, più pregiata. Il risultato delle due operazioni è una straordinaria resistenza alla corrosione ed una finitura brillante.

STABILITA'

I nostri supporti scomponibili ed asportabili, vale a dire le colonne che non sono fissate meccanicamente alle basi, sono perfettamente stabili; infatti la tecnologia da noi impiegata assicura un accoppiamento tra le conicità della base e del tubo così preciso da ottenere un'estrema rigidità.

PROTEZIONE DELLE ESTREMITA'

Tutte le estremità dei tubi delle colonne asportabili sono dotate di un tappo in plastica avente lo scopo di proteggere il tubo in caso di cadute che potrebbero deformarlo, rendendolo inutilizzabile o soggetto a giochi rispetto alla base.

SERRAGGIO DEI TELESCOPI

Il serraggio dei supporti telescopici è ottenuto con vari sistemi, ognuno dei quali è stato studiato in ogni dettaglio, per evitare di segnare, incidere o graffiare la parte a vista del tubo, che mantiene inalterato nel tempo il suo aspetto perfetto.

BOCCOLE ANTIFRIZIONE

I tubi interni di tutti i nostri supporti telescopici scorrono su boccole in plastica che evitano l'usura dell'anodizzazione nei punti di frizione per rotazione o movimento verticale.

MATERIAL OF CONSTRUCTION

All of our pedestals are made of the high grade marine alloy "ANTICORODAL", which has a better resistance to weathering and salt water corrosion than other light alloys.

FINISH

All of our pedestal tubes are dipped anodised. The cast bases are treated twice; firstly by being blasted with steel balls to close the pores of the casting after which they are anodised. The resultant finish is a brilliant finish with an extraordinary resistance to corrosion.

STABILITY

The removable pedestals known as "post systems", do not have mechanical fixings, but consist of one precise taper dropping into a matching taper. Our advanced technology ensures that there is a tight fit eliminating movement between base and post.

END GUARD

The ends of the tubes are sealed with a rigid plastic cover that prevents deformation damage if the tube is accidentally dropped. Maintaining shape preserves fit and therefore rigidity

CLAMPING SYSTEMS

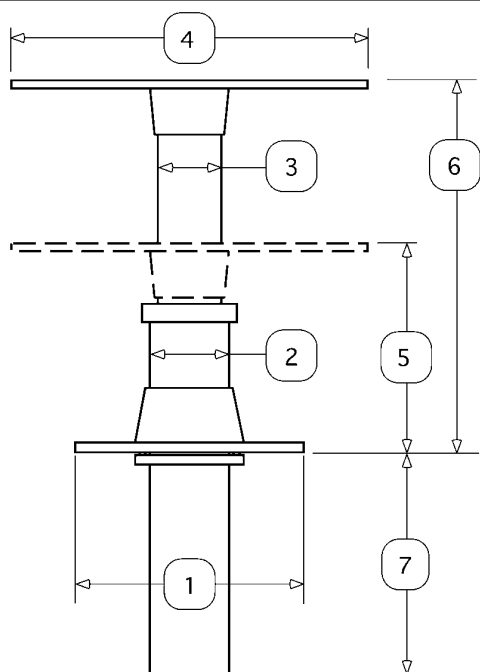
The different clamping systems for the telescopic pedestals have all been studied in detail to limit surface scratching on the tubes, in order to preserve the perfect finish.

LOW FRICTION BUSHES

The inner tube of all our telescopic pedestals runs in a plastic bush that avoids wear and tear on the friction points arising from both the rotating and up and down movement.

supporti con sporgenza regolabile

pedestals with periscope base



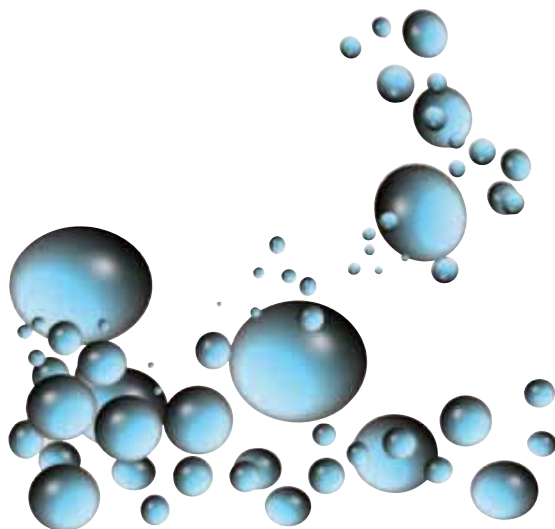
1	Base a pavimento / Floor base
2	Ø Tubo inferiore / Dia external tube
3	Ø Tubo superiore / Dia internal tube
4	Piano di appoggio per tavolo / Upper base for table or chairs
5	Campo altezza minima / Minimum height range
6	Campo altezza massima / Maximum height range
7	Sporgenza regolabile sottopagliolo / Adjustable under floor projection

SUPPORTI CON SPORGENZA REGOLABILE

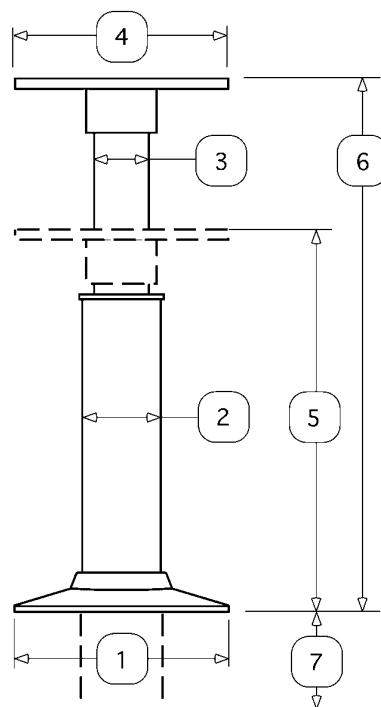
Questa versione ha la possibilità di regolare, al momento dell'installazione, la base inferiore lungo il tubo per poter così ottenere l'altezza minima desiderata. Le quote indicate fanno quindi corrispondere alla massima sporgenza sottopagliolo (7) la minima "altezza minima" (5) e la minima "altezza massima" (6) ottenibili e vice versa, alla minima sporgenza, la massima "altezza minima" e la massima "altezza massima". Di conseguenza, ad una riduzione della sporgenza corrisponde in proporzione un aumento delle altezze minima e massima.

PEDESTALS WITH PERISCOPE BASE

This version of pedestals has a lower main tube, which can be slid down through the base to obtain a lower height. In the Tables, the largest under floor projection (7) will occur when the lower tube is in its lowest position corresponding to the lowest minimum height (5) as well as the lowest maximum height (6), and vice versa. In any intermediate position a given reduction in projection will add (by the same amount) to both the minimum and maximum heights.



1	Base a pavimento / Floor base
2	Ø Tubo inferiore / Dia external tube
3	Ø Tubo superiore / Dia internal tube
4	Piano di appoggio per tavolo o poltrona / Upper base for table or chairs
5	Campo altezza minima / Minimum height range
6	Campo altezza massima / Maximum height range
7	Sporgenza fissa sottopagliolo / Base projection



supporti standard

standard pedestals

Tutte le misure sono espresse in mm. All sizes are in mm.



Il costruttore si riserva il diritto di apportare tutte le modifiche che riterrà necessarie.
The manufacturer reserve the right to alter specifications without notice.



Strada Padana Superiore, 256/266
20090 Vimodrone (Mi) Italy
Tel. +39.02.27.40.80.33
Fax. +39.02.25.04.072
info@barka.it - www.barka.it

